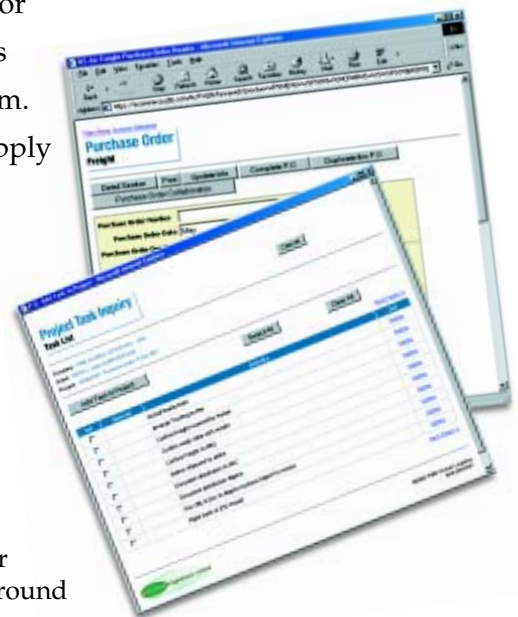


## Workflow Efficiencies through Purchase Order Management

Optimize procurement by integrating your purchasing function into your full supply chain. PBB's order management application lets you manage purchase orders from creation to completion, enabling you to collaborate on-line with vendors throughout the process for maximum efficiency.



PBB's e-Procurement solution improves vendor management, reduces cycle time and achieves cost savings for all parties accessing the system. By interfacing with PBB's range of on-line supply chain management tools, full visibility of the progress of your order is guaranteed.



## Why Use PBB's e-Procurement Service?

- ▶ Secure, real-time Web access to purchase order data, facilitating collaboration with vendors around the world.
- ▶ Standardized platform for tracking orders reduces uncertainty, delays and paperwork throughout the purchasing process.
- ▶ Greater order accuracy and processing – preloaded database of SKUs means less re-keying.
- ▶ Customizable event-driven tasks guide all parties to work proactively and ensure quality assurance, with automatic flags to keep orders on track.
- ▶ Analyze historical purchase data, compare prices and vendors, ultimately lowering costs of goods and materials.
- ▶ Interfaced with PBB's integrated supply chain services, providing full visibility of order data and physical movement of goods.



## Multiple Applications Tailored to Any Supply Chain

With PBB's e-Procurement system, your purchasing can be managed independently or in conjunction with any of our integrated supply chain services, including International Freight Forwarding, North American Shipping, Customs Brokerage and Warehousing & Distribution. Regardless of the complexity of your supply chain, PBB's e-Procurement solution provides bottom-line benefits to your purchasing function.

### Global Transportation

Order management helps you collaborate with domestic and international suppliers while interfacing with PBB's freight systems for real-time tracking and tracing of shipments. Establish tasks to remind and streamline key processes such as generation of commercial invoices, application for import permits and document translation.

### Customs Brokerage

When a purchase order is created, it automatically populates key trade documents required for import and export shipments. Reduced re-keying of data and immediate access to existing customized tariff databases improve order accuracy. This ultimately reduces the potential for unnecessary border delays and penalties resulting from non-compliance and clerical errors.

### Inventory Management

Interfacing with PBB's Warehousing & Distribution systems, e-Procurement offers the tools to better manage inventory. As vendors respond and update purchase order details in the system, advance shipping notices can be issued automatically and potential back-order situations can be identified and addressed. Increased stock accuracy and fill rates to customers is also ensured, as SKU data from purchase orders feeds into inventory systems.

## PBB Corporate Offices

### Corporate Office

33 Walnut Street  
P.O. Box 40  
Fort Erie, ON  
L2A 5M7  
Telephone: (905) 871-6500  
Facsimile: (905) 871-6066

### U.S.A. Head Office

670 Young Street  
Tonawanda, NY 14150-4103  
Mail: P.O. Box 950  
Buffalo, NY 14213-0950  
Telephone: (716) 692-3100  
Facsimile: (716) 692-3103

**PBB**  
Global Logistics  
[www.pbb.com](http://www.pbb.com)



International Freight Forwarding

Customs Brokerage

Warehousing & Distribution

North American Shipping

Trade & Regulatory Services

Corporate Audit

Parcel Logistics

Corporate Travel

e-globallogistics.com™

Printed in Canada.  
07/15/02 ADV.#96

